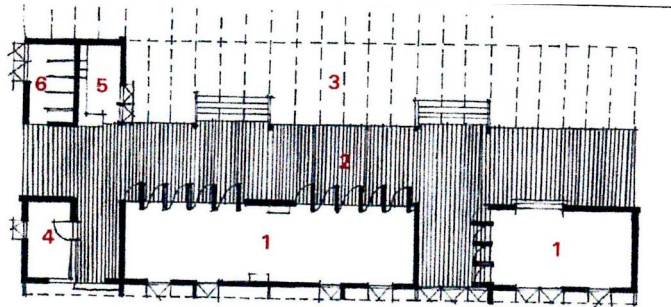


Orange Farm Community Facilities

M.I.P. Studiowork Excercise

1: Thembelihle Crèche.

The functional idea behind this project was to create a structure that by using materials and devices in an innovative and novel way, it will create a climatically sensitive building that utilizes a level site to the advantage of its functions, thus creating a building that acts as an extension to the play ground.



Floor Plan

1 CLASSROOM

2 VERANDA

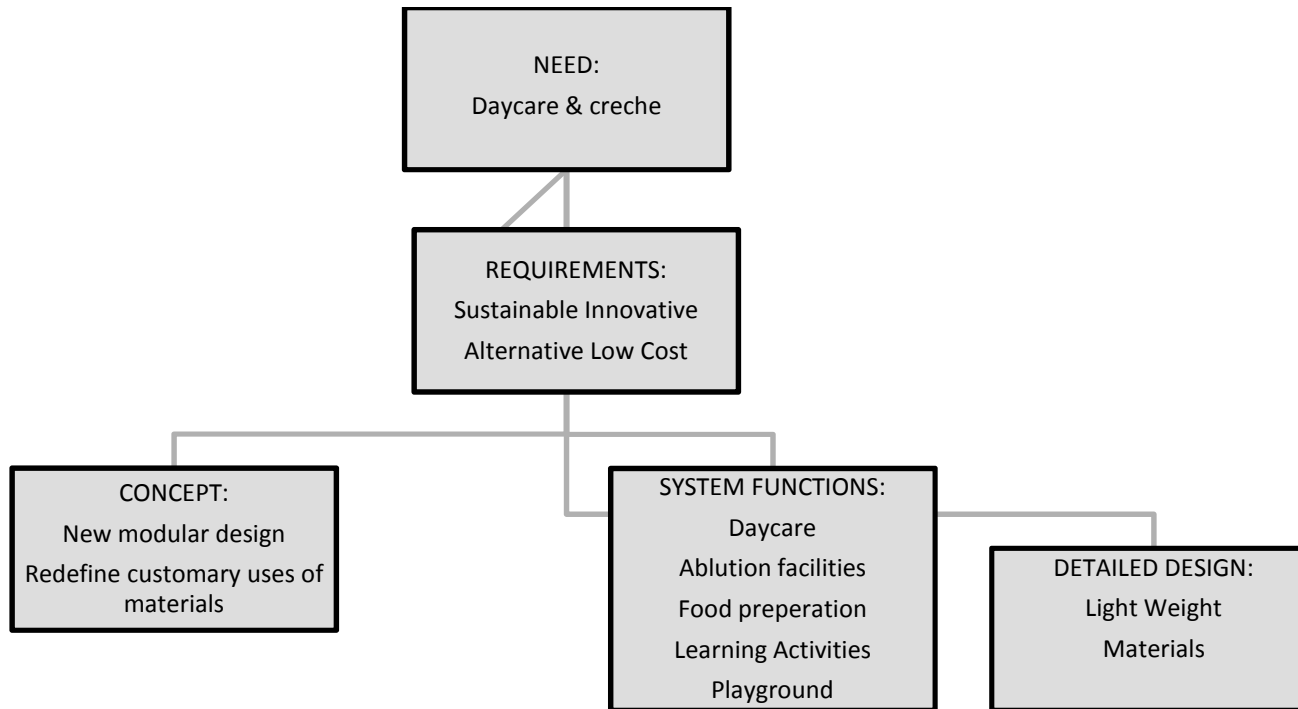
3 SHADED PLAY
AREA

4 OFFICE

5 KITCHEN

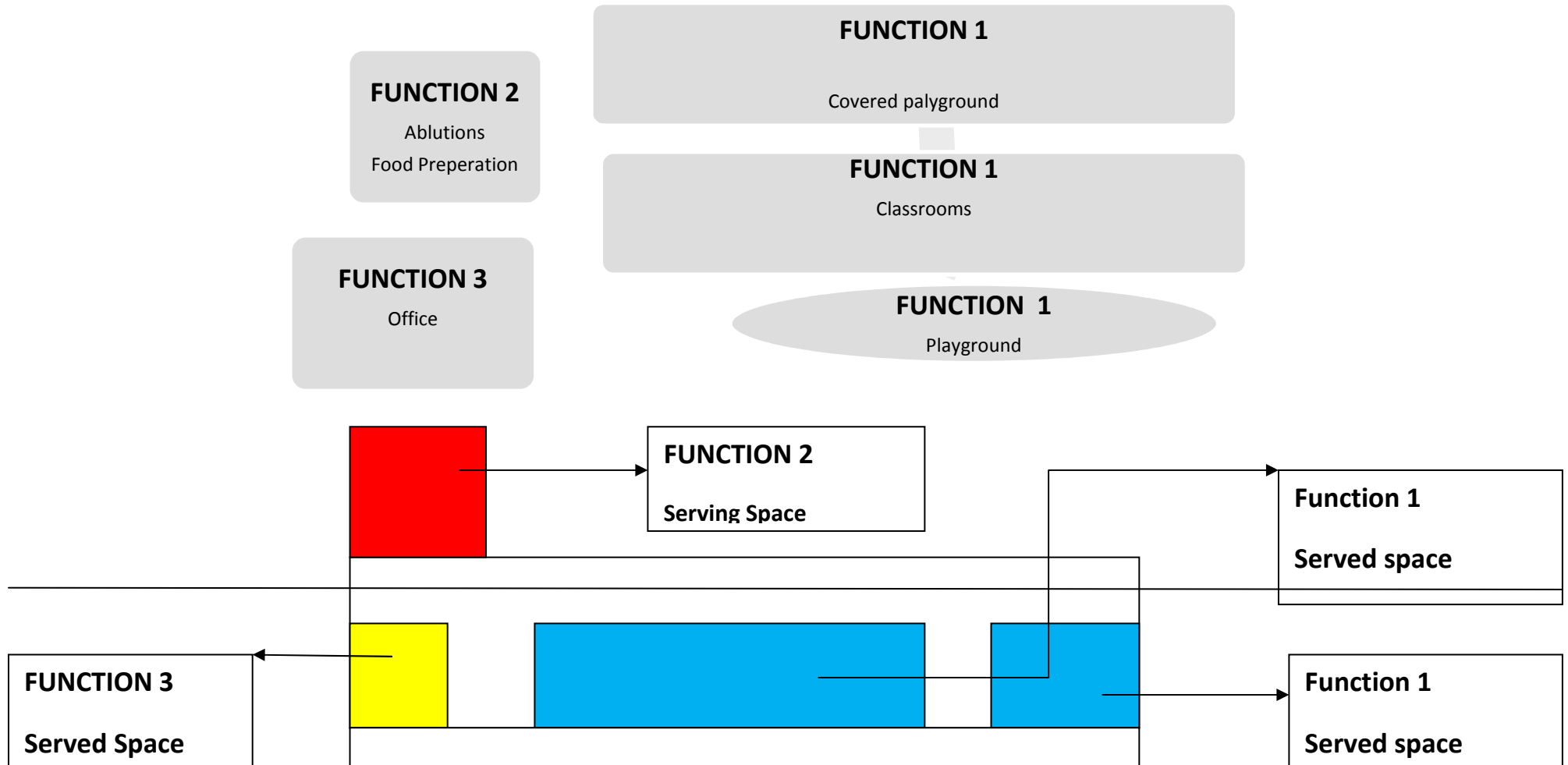
6 ABLUTIONS

1.2: Diagram Reflecting the functional idea behind the design.



The building consists of a simple timber frame structure, a dividable main classroom, a secondary classroom, open veranda, office space and a solid ablution facility and kitchen. Folding doors, polycarbonate sheeting is used as cladding and corrugated sheeting for roof finishes and shade netting over some areas, thus providing a sustainable, low cost, contemporary expression of shelter and shade and optimizing natural ventilation and light. The added shaded play areas increase the usable percentage of covered space to merge the inside and outside spaces. This creates the effect of a continued playground that moves through the structure.

1.3: Diagram reflecting the functional organization in the design.



*Does this structure challenge traditional building concepts?

-Yes; Alternative interactive design of a crèche.

*Is there Architectural, elementary order?

-Yes; Solid frame, dynamic movement, spaces are defined and not enclosed.

* Does the technology in the construction develop or support the concept?

-Yes; the straight forward and honest expression of the timber, polycarbonate sheet cladding and roof sheeting embody a vernacular design that reflects the contiguous context in which it has been constructed. A fresh approach to regular urban development issues. The building symbolizes mediation between a previously disadvantaged community and a new educational facility with an emphasis on combining the outside (playground) with the inside (classrooms).

3: References:

Dr Osman A, 10 Years + 100 Buildings, 2009

Mpahlwa L, Khatieb-Parker R,, Digest of South African Architecture, 2010, p76-77

Righini P, Thinking Architecturally, 2009

