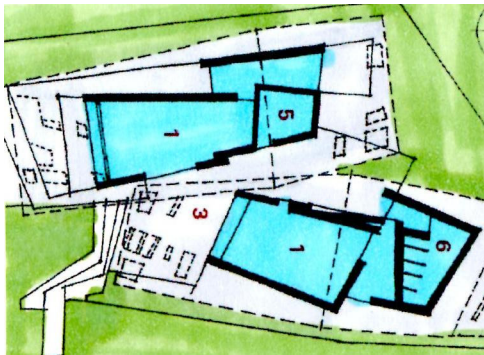


Orange Farm Community Facilities

M.I.P. Studiowork Excercise

1: Olifantsvlei Crèche.

The functional idea behind this project was to create an through an alternative design using discarded materials in an inventive, recycled way. The brief described a need for a structure that could accommodate a few people for a brief period when needed, an ablution facility and a food preparation space.



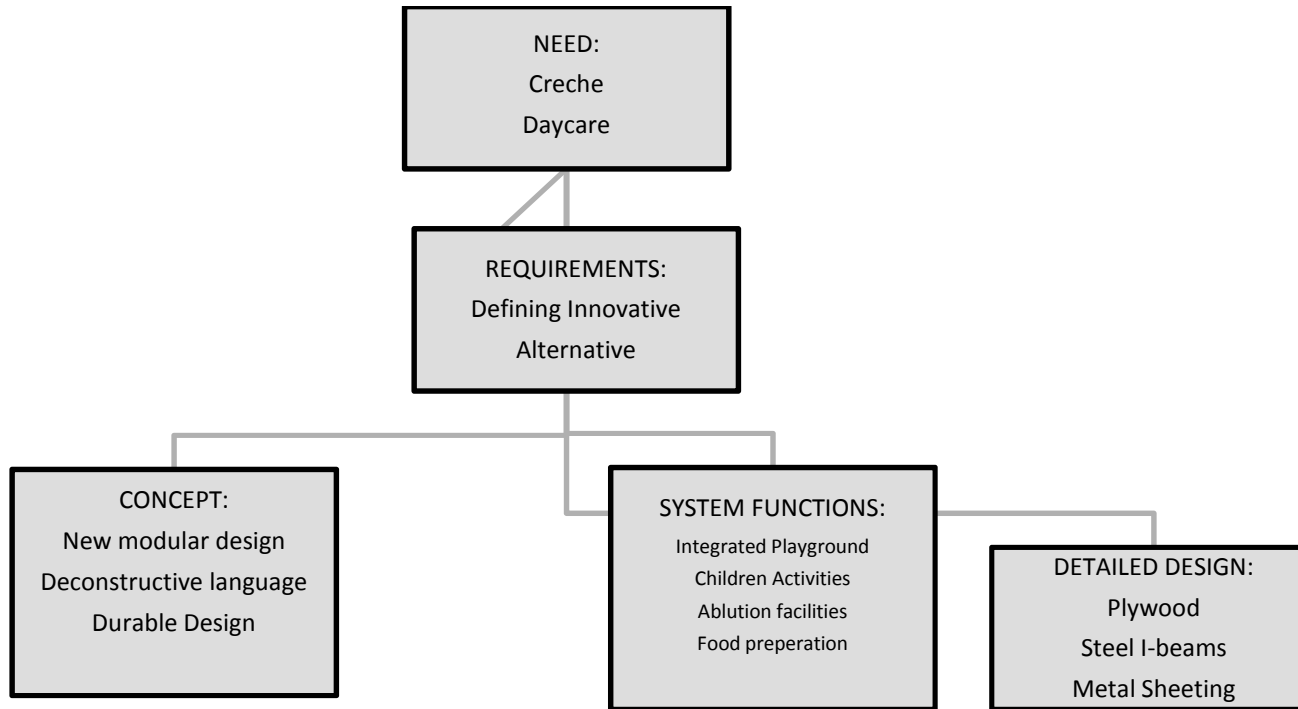
- 1 Classroom
- 3 Shaded Play Area
- 5 Kitchen
- 6 Ablutions



Floor Plan (showing integrated playground throughout structure)

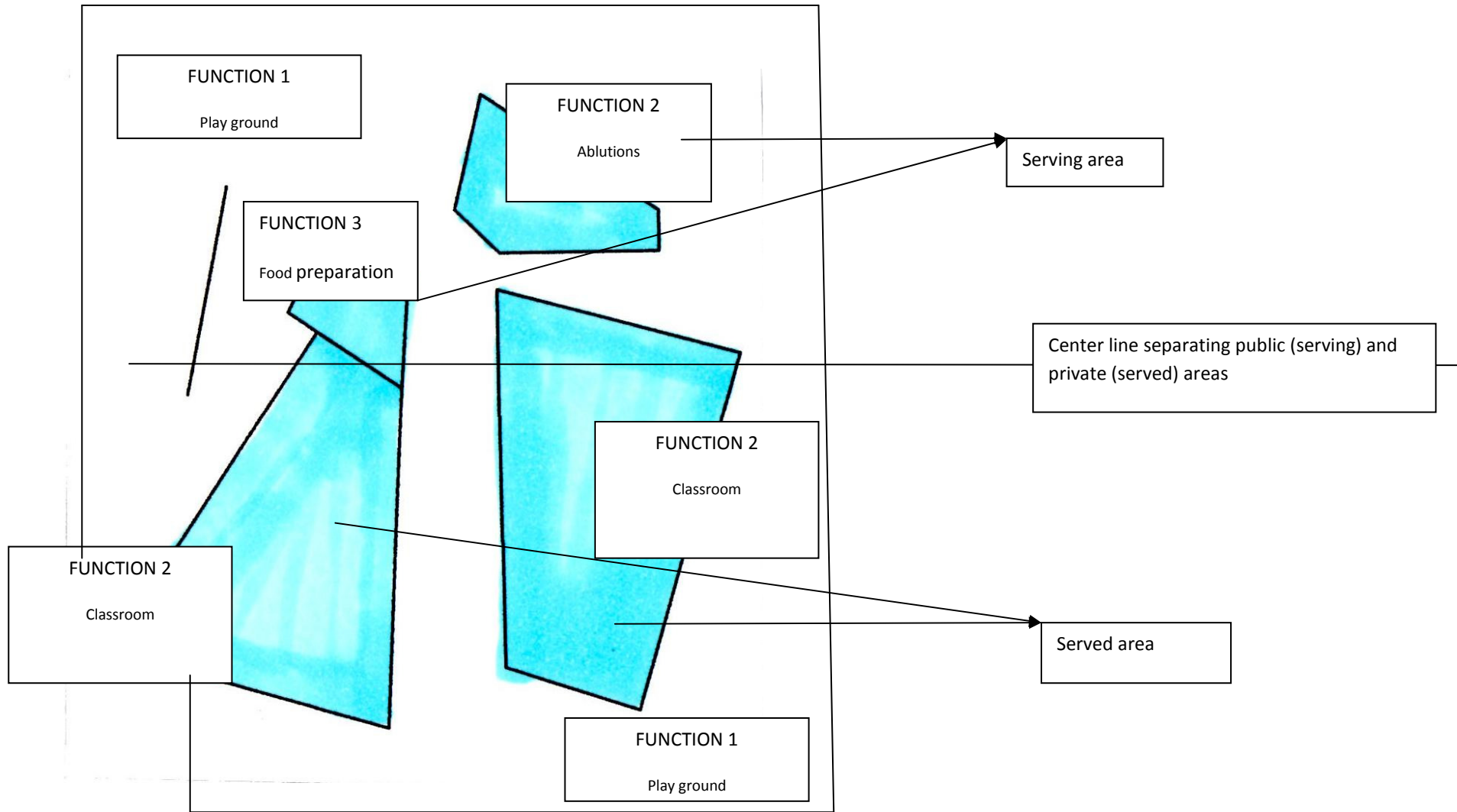
Site Plan

1.2: Diagram Reflecting the functional idea behind the design. durability



The building consists of a varied steel beam frame structure, a plywood clad ablution and kitchen area, sheet metal roof, thus providing a integrated contemporary expression of shelter and shade. No masonry can be seen thus eliminating wet works and cutting costs.

1.3: Diagram reflecting the functional organization in the design.



2: Questions:

*Does this structure challenge traditional building concepts?

-Yes; Alternative interpretation of community centre by not confining space.

*Is there Architectural, elementary order?

-Yes; Solid frame, dynamic movement, spaces are defined and not enclosed.

* Does the technology in the construction develop or support the concept?

-Develop yes; the open use of and expression of the steel I-beams, roof sheeting and plywood cladding embody a vernacular design that reflects the contiguous context in which it has been constructed. A fresh approach to regular urban development issues. The building symbolizes mediation between a previously disadvantaged community and a new educational facility and provides an additional element by shading a playground. It can be interpreted as a more permanent structure than the other 5 buildings looked at in this study, which is strongly reflected in the choice of materials such as the steel columns. Cost effectiveness is represented through the plywood and sheet roofing. The transition from playground to classroom seems effortless and dynamic.

3: References:

Prof. Joubert O, 10 Years + 100 Buildings, 2009

Digest of South African Architecture, 2010

Righini P, Thinking Architecturally, 2009

